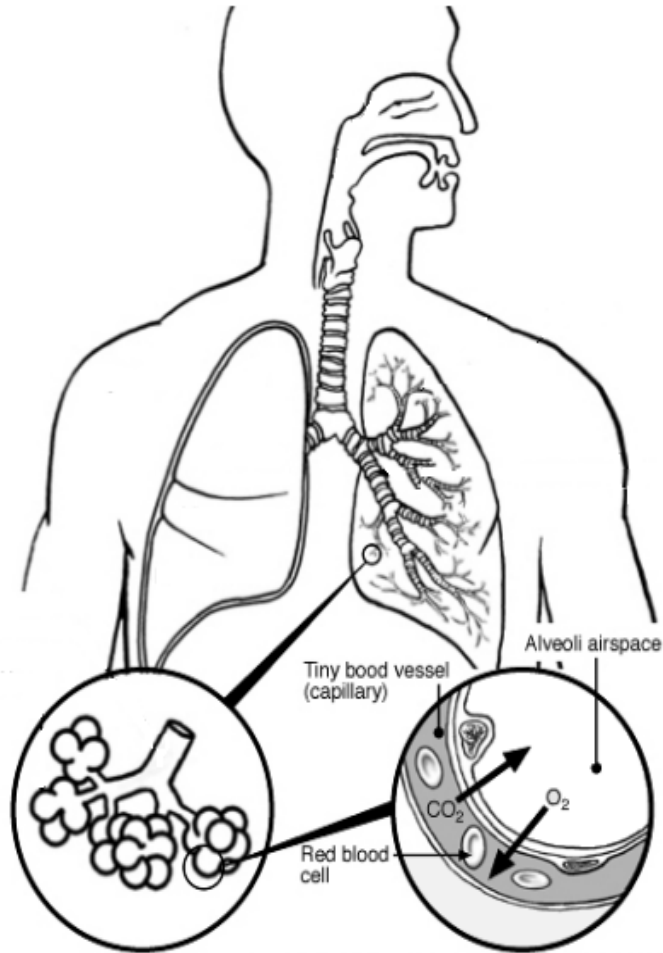


Name: _____ Per: _____

Respiratory System Assignment

Using the list below, **label** and **color** the different parts of the respiratory system.



Alveoli

Lung

Pleural cavity

Bronchi

Nasal cavity

Trachea

Bronchioles

Nasopharynx

Visceral pleura

Epiglottis

Oropharynx

Larynx

Parietal pleura

*Draw the diaphragm

Laryngopharynx

Pharynx

*Draw a horizontal line dividing the upper and lower Respiratory systems

Define the following terms.

Surfactant-

Alveoli-

Surface tension-

Bronchioles-

Nasal conchae-

Pharynx-

Epiglottis-

Trachea-

True vocal cords-

Larynx-

Nasal septum-

False vocal cords-

Create a flow map of air movement through the respiratory tract with the following anatomical structures:

Trachea

Nasopharynx

Oropharynx

Alveoli

Bronchi

Nostrils

Laryngopharynx

Alveolar ducts

Bronchiole

Larynx

Nasal cavity

Terminal bronchiole

Answer the following questions.

1. Explain the anatomical structures involved in voice production and the mechanism by which sound is produced.

2. What is the role of surfactant in the alveoli?

3. What anatomical structure is the epiglottis located on and what is its function?

4. Why are the alveoli and capillaries comprised of simple squamous epithelial tissue?