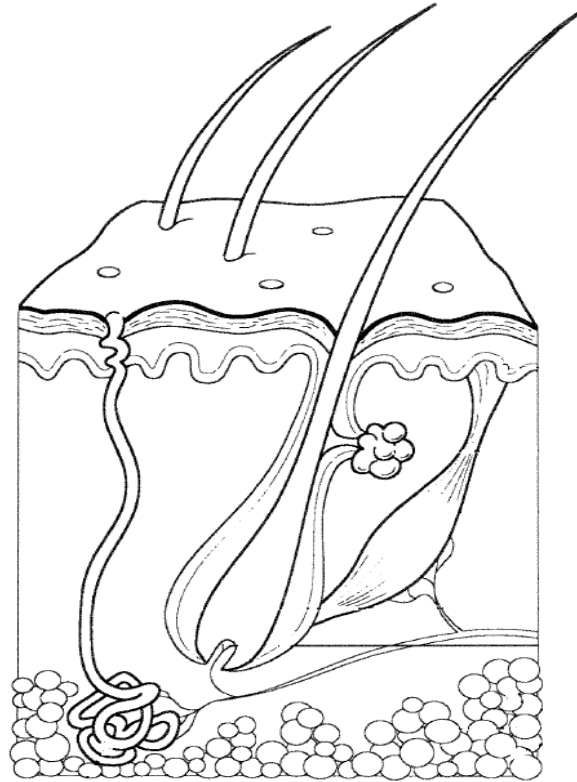


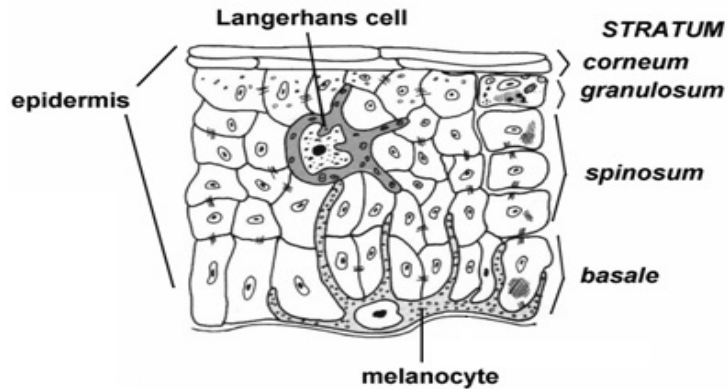
**Section 5.1  
Regular Anatomy**

Using different colors and the list below, color and label the different parts of the skin.



- |                                     |                                  |                                       |
|-------------------------------------|----------------------------------|---------------------------------------|
| <input type="radio"/> Adipose cells | <input type="radio"/> Epidermis  | <input type="radio"/> Stratum basale  |
| <input type="radio"/> Dermis        | <input type="radio"/> Hypodermis | <input type="radio"/> Stratum corneum |

Using different colors and the list below, color the different parts of the epidermis.



- |                 |                 |
|-----------------|-----------------|
| Langerhans cell | Stratum basale  |
| Melanocyte      | Stratum corneum |

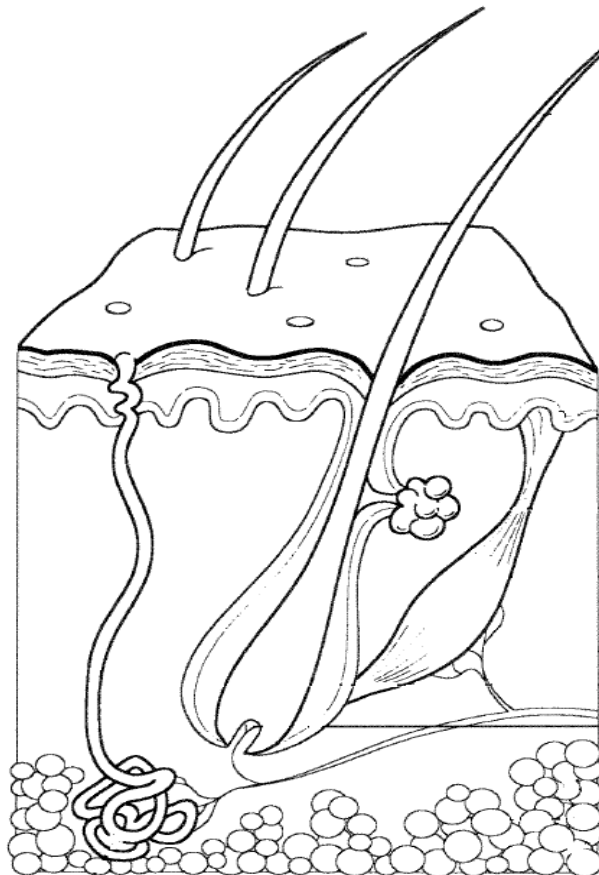
- The pigment produced by melanocytes that gives skin its color is called \_\_\_\_\_.
- Macrophages located in the epidermis that phagocytize microbes are called \_\_\_\_\_.
- The uppermost layer of the epidermis is called the \_\_\_\_\_.
- The deepest layer of the epidermis that is superior to the dermis is called the \_\_\_\_\_.

**Complete the paragraph about keratinization in the epidermis.**

Cells in the stratum 1 constantly undergo 2, or cell division. As the cells divide, they are pushed to the surface towards the stratum 3. As cells are pushed to the uppermost layer of the epidermis, 4 produce 5, a tough fibrous protein, that begins to fill the inside of the cell. Because these cells are moving away from their blood supply and they are being filled with keratin, they 6. 7 is the process in which cells fill with keratin, become hard and die. This process is what gives skin its tough armor-like quality.

1. \_\_\_\_\_
2. \_\_\_\_\_
3. \_\_\_\_\_
4. \_\_\_\_\_
5. \_\_\_\_\_
6. \_\_\_\_\_
7. \_\_\_\_\_

**Using different colors and the list below, color and label the different parts of the dermis.**



Dermis

Dermal papilla

1. The dermis is composed of \_\_\_\_\_ connective tissue.
2. What in the dermis creates the image below?



3. \_\_\_\_\_ fibers in the dermis are flexible and offer great resistance to overstretching and prevent the skin from being torn.
4. \_\_\_\_\_ fibers in the dermis stretch and recoil back to shape.