

Name \_\_\_\_\_ Per. \_\_\_\_\_ Date \_\_\_\_\_

## Webquest: Accessory Organs of Integumentary System

Using the given website, <http://www.zoology.ubc.ca/~biomania/tutorial/skin/outline.htm>, answer the questions and complete the statements.

Use the  to navigate between pages.

### Skin Appendages

#### Hair

- 1 The primary function of hairs is \_\_\_\_\_.
- 2 Hair is made of dead \_\_\_\_\_ cells.
- 3 The two areas of hair is the \_\_\_\_\_ and the \_\_\_\_\_.
- 4 What is the distinguishing characteristic that determines whether the part of hair is the shaft or the root?
- 5 What is the shape of the shafts of your hair?
- 6 The root of a hair is contained inside a bag called the \_\_\_\_\_.
- 7 As the older hair cells are pushed upward by the newer hair cells produced, they become increasingly \_\_\_\_\_ and die.
- 8 Associated with each hair follicle is a tiny band of smooth muscle: the \_\_\_\_\_.
- 9 Contraction of the arrector pili muscles causes \_\_\_\_\_.

#### Sebaceous Glands

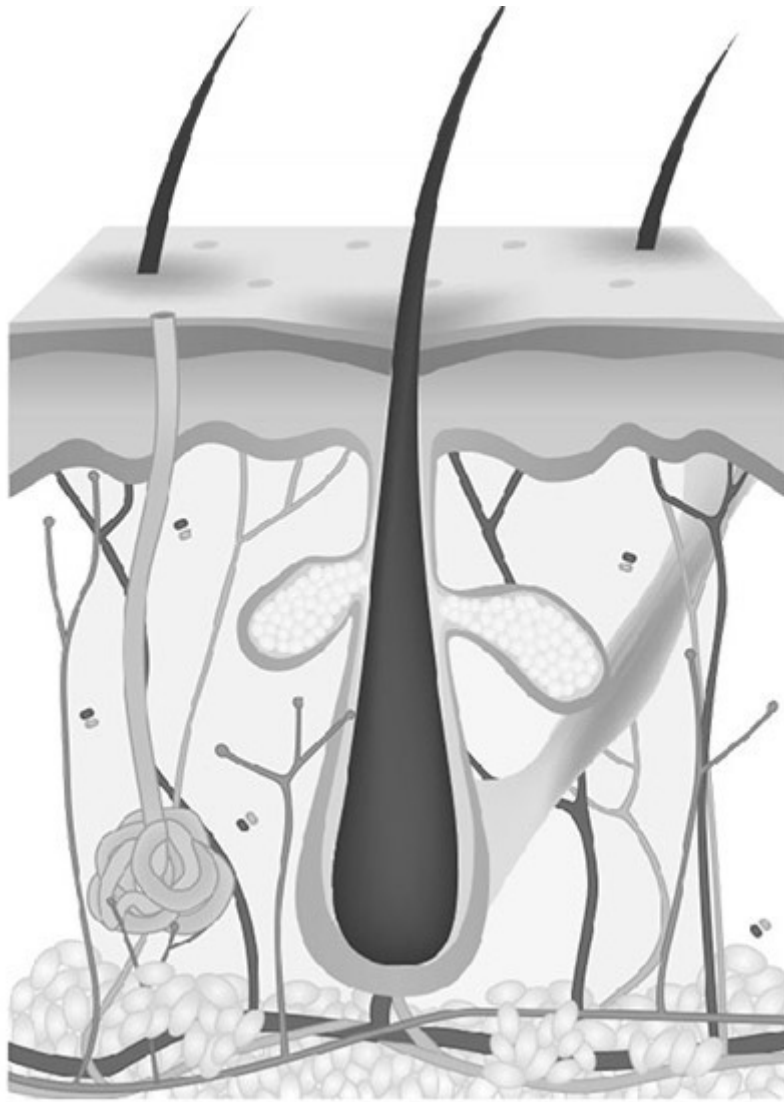
- 1 Sebaceous glands are \_\_\_\_\_.
- 2 Sebaceous glands secrete \_\_\_\_\_.
- 3 Where are oil glands **not** found?

#### Sweat Glands

- 1 \_\_\_\_\_ are the most common type of sweat gland.
- 2 What is sweat?
- 3 What is the function of sweat?
- 4 \_\_\_\_\_ are found mainly in the skin of the armpits, of the anogenital areas and of the areola of the breasts.

Click on blue bold "Sebaceous Glands" and "Sweat Glands" to help you label the following:

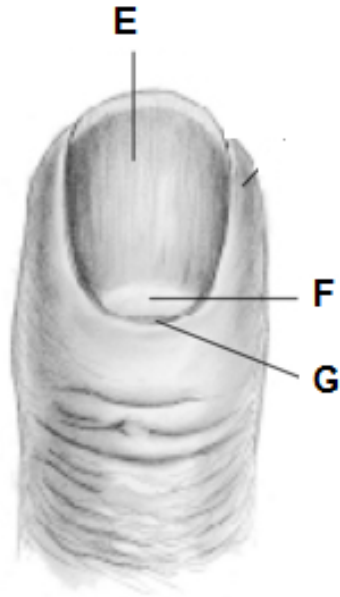
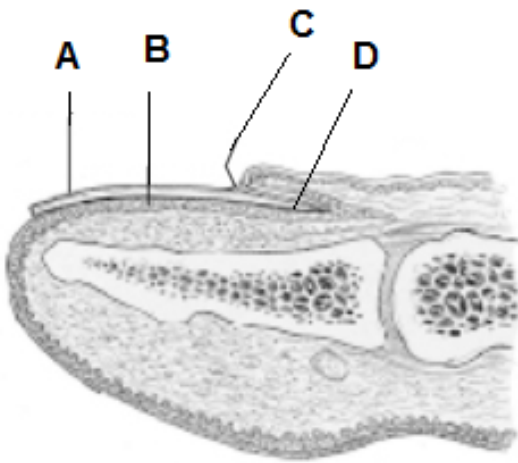
hair shaft, hair follicle, hair root, arrector pili muscle, sebaceous glands, and sweat gland.



## **Nails**

- 1 \_\_\_\_\_ are hard plates of tightly packed keratinized cells.
- 2 List the 3 regions of the nail.
- 3 The \_\_\_\_\_: portion of the nail that is visible.
- 4 The nail body rests upon the \_\_\_\_\_.
- 5 The \_\_\_\_\_: visible portion of the nail that extend past the end of the digit.
- 6 The \_\_\_\_\_: hidden portion of the nail that is embedded in a fold of skin (or nail fold).
- 7 The site of nail growth is the \_\_\_\_\_ that is found beneath the nail root.

Click on blue bold "nail" and label the following images:



- A. \_\_\_\_\_
- B. \_\_\_\_\_
- C. \_\_\_\_\_
- D. \_\_\_\_\_

- E. \_\_\_\_\_
- F. \_\_\_\_\_
- G. \_\_\_\_\_
- H. \_\_\_\_\_



**The Hypodermis**

- 1 Is the hypodermis part of the skin?
- 2 What types of connective tissue is the hypodermis composed of?
- 3 What is the function of the hypodermis?