

Name \_\_\_\_\_ Per. \_\_\_\_\_ Date \_\_\_\_\_

## Webquest: Integumentary Layers

Using the given website, <http://www.zoology.ubc.ca/~biomania/tutorial/skin/outline.htm>, answer the questions and complete the statements.

Use the  to navigate between pages.

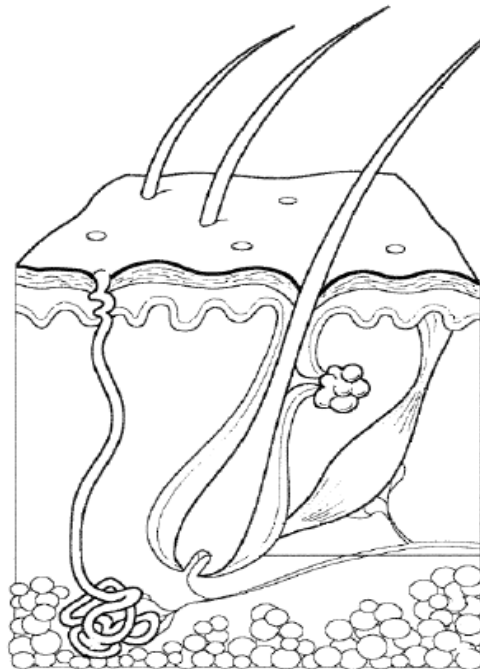
### Introduction and Objectives

- 1 The \_\_\_\_\_ is one of the largest and heaviest organ of the body.
- 2 The two layers of the skin are the \_\_\_\_\_ and the \_\_\_\_\_.
- 3 List the 4 appendages (accessory organs) of the skin.
- 4 Another name for subcutaneous tissue is \_\_\_\_\_.
- 5 List the 7 functions of the integumentary system.

Identify each layer listed below by clicking on blue bold term.

Using different colors and the list below, color and label the different parts of the skin.

- Epidermis
- Dermis
- Hypodermis



Click on

## The Skin

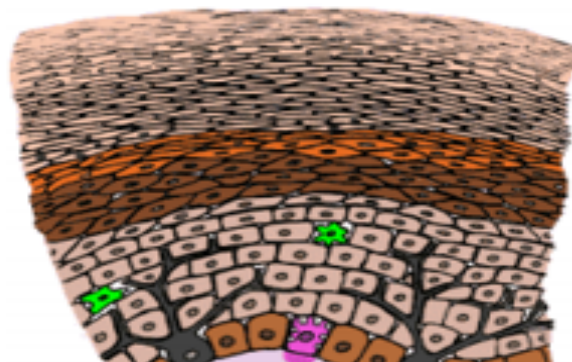
### The Epidermis

- 1 What type of tissue is the epidermis? \_\_\_\_\_
- 2 List 2 functions of the protein keratin.
- 3 List the 4 types of epidermal cells.
- 4 What is the function of a keratinocyte?
- 5 What are Merkel Cells?
- 6 What do melanocytes produce?
- 7 What type of cell is a Langerhans cell?

**You will only need to know about the stratum basale and stratum corneum of the epidermis.**

- 8 The \_\_\_\_\_ is the deepest epidermal layer.
- 9 What two types of epithelial cells will you find in the stratum basale?
- 10 The 3 types of cells found in the stratum basale are \_\_\_\_\_, that produce keratin, \_\_\_\_\_, that produce the pigment melanin, and \_\_\_\_\_, or sensory receptors.
- 11 What is the function of the pigment melanin?
- 12 The \_\_\_\_\_ is the outermost epidermal layer.
- 13 What type of epithelial cell would you find in the stratum corneum?
- 14 What does keratinized mean?

Click on blue bold "epidermal cells" to label cells of the epidermis. Then click on blue bold "several layers of cells" to label epidermal layers:



## The Dermis

- 1 List the 7 types of appendages (accessory organs) found within the dermis.
- 2 \_\_\_\_\_ is the outer layer closest to the epidermis.
- 3 What type of connective tissue is the papillary layer composed of?
- 4 List the 4 types of appendages (accessory organs) found within the papillary layer.
- 5 \_\_\_\_\_ is the deeper layer and the thickest of the dermis.
- 6 What type of connective tissue is the reticular layer composed of?
- 7 List the two types of fibers found in the reticular layer.
- 8 List the 5 types of appendages (accessory organs) found within the reticular layer.

Click on blue bold “papillary layer” or “reticular layer” to identify the structures below.

Using the diagram below, label the epidermis, dermis, hypodermis, hair, sebaceous gland, Pacinian corpuscle, sweat glands, Meissner corpuscle, free nerve endings

